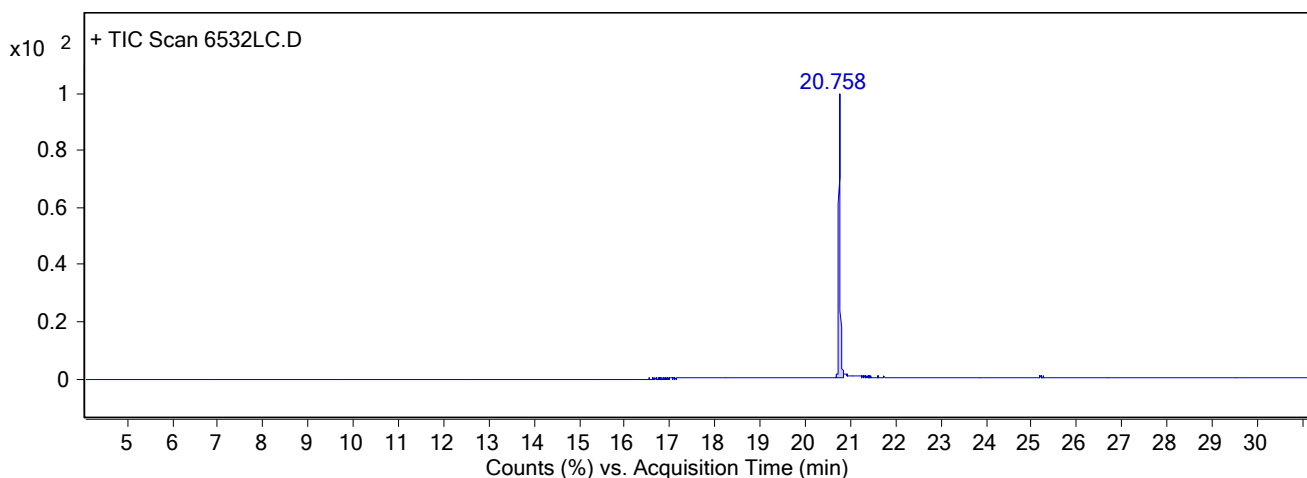


Qualitative Analysis Report

Data File	6532LC.D	Sample Name	X23
Sample Type		Position	2
Instrument Name	GCMSD	User Name	
Acq Method	Alkaloid analysis.M	Acquired Time	5/24/2022 2:00:02 PM
IRM Calibration Status	Not Applicable	DA Method	default.m
Comment		Sample Amount	
Expected Barcode		TuneName	ATUNE.U
Dual Inj Vol	1	TuneDateStamp	2022-05-23T13:24:44+02:00
TunePath	C:\MassHunter\GCMS\1\5975\	OperatorName	
MSFirmwareVersion	7.02.29	Acquisition SW Version	MassHunter GC/MS Acquisition B.07.06.2704 18-Jul-2017 Copyright © 1989-2017 Agilent Technologies, Inc.
RunCompletedFlag	True		

User Chromatograms

Fragmentor Voltage Collision Energy 0 Ionization Mode EI



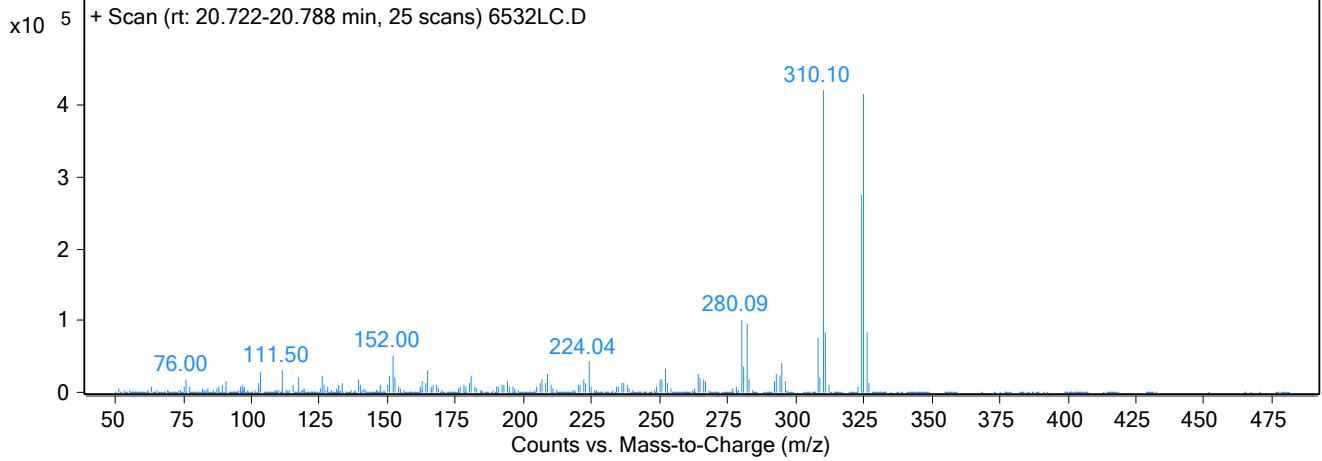
Integration Peak List

Peak	Start	RT	End	Height	Area	Area %
1	20.694	20.758	20.86	6058459.28	14350477.1	100

User Spectra

Spectrum Source	Fragmentor Voltage	Collision Energy	Ionization Mode
Peak (1) in "+ TIC Scan"		0	EI

Qualitative Analysis Report



Peak List

m/z	z	Abund
152		51716.32
224.04	1	41842.04
280.09	1	100488.96
282.04	1	96103.68
308.1	1	76833.72
310.1	1	420732.16
311.1	1	83285.52
324.1		274811.53
325.1	1	414198.09
326.1	1	83586

--- End Of Report ---