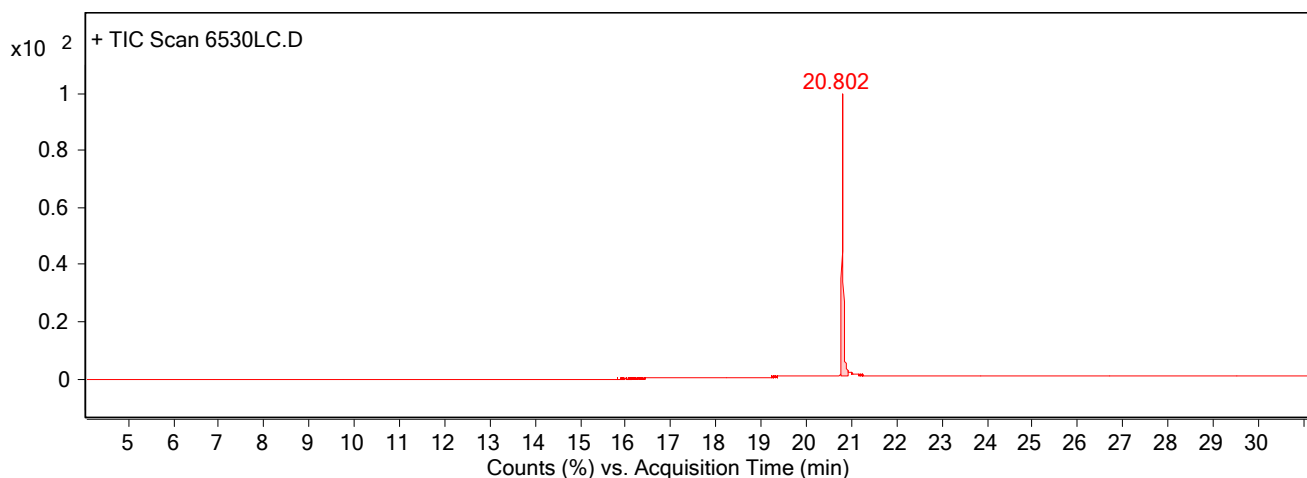


Qualitative Analysis Report

Data File	6530LC.D	Sample Name	X21
Sample Type		Position	3
Instrument Name	GCMSD	User Name	
Acq Method	Alkaloid analysis.M	Acquired Time	5/24/2022 12:05:37 PM
IRM Calibration Status	Not Applicable	DA Method	default.m
Comment			
Expected Barcode		Sample Amount	
Dual Inj Vol	1	TuneName	ATUNE.U
TunePath	C:\MassHunter\GCMS\1\5975\	TuneDateStamp	2022-05-23T13:24:44+02:00
MSFirmwareVersion	7.02.29	OperatorName	
RunCompletedFlag	True	Acquisition SW Version	MassHunter GC/MS Acquisition B.07.06.2704 18-Jul-2017 Copyright © 1989-2017 Agilent Technologies, Inc.

User Chromatograms

Fragmentor Voltage **Collision Energy** 0 **Ionization Mode** EI



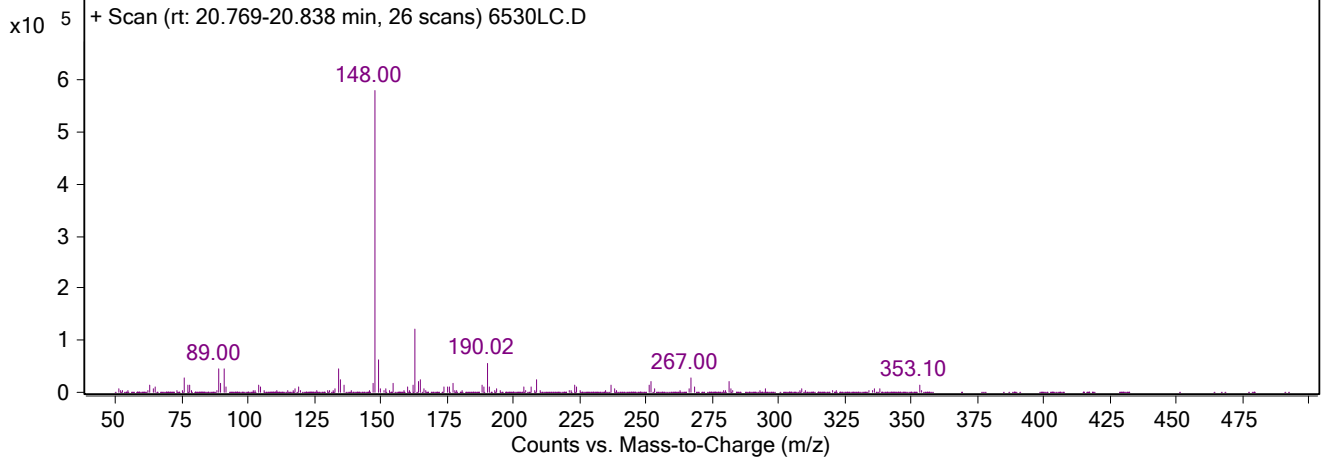
Integration Peak List

Peak	Start	RT	End	Height	Area	Area %
1	20.744	20.802	20.904	3907685.89	9216931.66	100

User Spectra

Spectrum Source	Fragmentor Voltage	Collision Energy	Ionization Mode
Peak (1) in "+ TIC Scan"		0	EI

Qualitative Analysis Report



Peak List

m/z	z	Abund
76		26818.73
89		47128.5
91.01		45264.42
134		46833
135		24484.58
148	1	581213.88
149	1	64044.88
163	1	121730.77
190.02	1	56130.73
267	1	29246.5

--- End Of Report ---